

lightENGINE

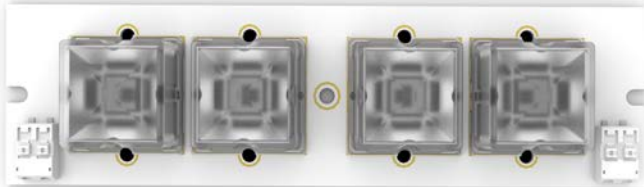
by

generalluminaire™

“Light Engine Is The Very Core Of General Luminaire”

Light engines and light engine modules are the foundation of General Luminaire. Since the inception of LED lighting, General Luminaire has designed and produced in high volume light engines and modules for many of the largest names in lighting.

From singular DC engines to complex multi-circuit ACIC designs that are UL Listed, years of experience have equipped General Luminaire with the ability to meet and far exceed customer requirements. Review our current solutions or work with us to custom develop your own.



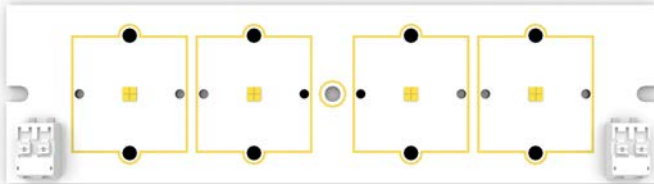
direct CURRENT series

Product Benefits

Available in multiple shape and sizes to fit in multiple systems
Fully traceable thanks to General Luminaires' QR code program
Custom layouts available with industry leading turn around time
Enables low-cost and compact luminaire designs
5 year guarantee

Product Features

High module efficacy: up to 180 lm/W*
Average lifetime (L80 B10): 50,000 h (temperature at $T_c = 55\text{ }^\circ\text{C}$)
Available with color temperature: 2700K to 6500 K
Color rendering index Ra: > 80, Ra: > 90 available
High initial color consistency: 3 SDCM
Poke-in wire connection for 0.5 mm^2 or 0.75 mm^2 wire
Serial and parallel possible connection
CE marked

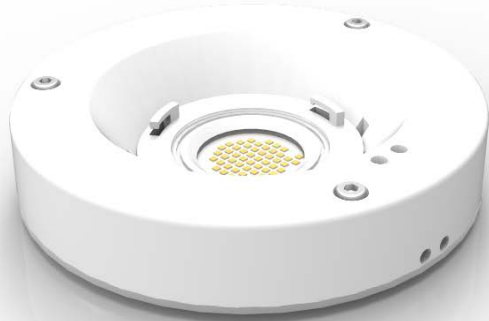


direct CURRENT series

Product	Dimension	Wattage	X = CRI *	Y = CCT	Efficacy	Voltage	Current
GLV94RE0381/CW-NXB16XY	140mm X 38mm	13.78W	7 = 70 CRI	27 = 2700K	Up To 196lm/W	45.9V	350mA
				30 = 3000K			
				35 = 3500K			
			8 = 80 CRI	40 = 4000K			
				45 = 4500K			
				50 = 5000K			
			9 = 90 CRI	57 = 5700K			
				65 = 6500K			
				CUS*			
GLV94RE0381/CW-NXB16XY	140mm X 38mm	23.44W	7 = 70 CRI	27 = 2700K	Up To 159lm/W	46.9V	500mA
				30 = 3000K			
				35 = 3500K			
			8 = 80 CRI	40 = 4000K			
				45 = 4500K			
				50 = 5000K			
			9 = 90 CRI	57 = 5700K			
				65 = 6500K			
				CUS*			
GLV94RE0381/CW-NXB16XY	140mm X 38mm	33.60W	7 = 70 CRI	27 = 2700K	Up To 148lm/W	48.0V	700mA
				30 = 3000K			
				35 = 3500K			
			8 = 80 CRI	40 = 4000K			
				45 = 4500K			
				50 = 5000K			
			9 = 90 CRI	57 = 5700K			
				65 = 6500K			
				CUS*			

Some CRI options are limited per CCT selection *
 Specification as seen here is subject to change without notice **
 Please contact your General Luminaire L.E.B.U. representative for details

White TUNABLE series



Product Benefits

- Color temperature tunable for humancentric applications
- Fully traceable thanks to General Luminaires' QR code program
- Custom CCT range's available with industry leading turn around time
- Enables low-cost and compact luminaire designs
- General Luminaire digital driver available
- 5 year guarantee

Product Features

- High module efficacy: up to 155 lm/W*
- Average lifetime (L80 B10): 50,000 h (temperature at $T_c = 55\text{ }^\circ\text{C}$)
- Color temperature range: 2700K to 6500 K
- Color rendering index Ra: > 80, Ra: > 90 available
- High initial color consistency: 3 SDCM
- Poke-in wire connection for 0.5 mm² or 0.75 mm² wire
- CE marked

White TUNABLE series

Product	Dimension	Wattage	CRI	CCT (Kelvin)	Efficacy	Voltage	Current
---------	-----------	---------	-----	--------------	----------	---------	---------

GLV94C3030U/00-SD2488A2	ø 30mm	19W	80CRI	2700K & 6500K	Up To 100lm/W	37.8V	500mA
GLV94C4545U/00-SD4968A2	ø 45mm	38W		2700K & 6500K			1000mA
GLV94C5050U/00-SD6E48A2	ø 50mm	57W		2700K & 6500K			1500mA

Efficacy values will vary depending on CCT value set
 Specification as seen here is subject to change without notice *
 Please contact your General Luminaire L.E.B.U. representative for details



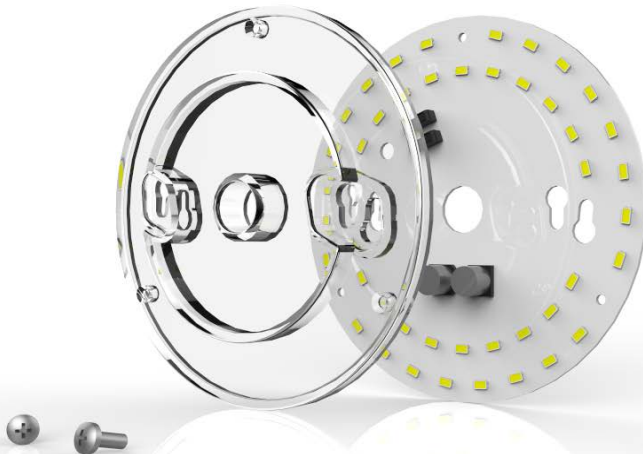
CEILING MOUNT SERIES

Product Benefits

- Connect directly to AC mains voltage for class 1 luminaires
- Enables low-cost and compact luminaire designs
- Project cost reduction by simplified installation and BOM reduction
- Enhanced safety and UL listed
- Simplified logistics as no external driver or special cables are required
- 3 year guarantee

Product Features

- LED engine with integrated driver
- Competitive system efficacy for AC operation: up to 103 lm/W
- Color temperatures available: 2700 K to 6500 K
- Color rendering index Ra: > 80, Ra: > 90 available
- Poke-in wire connection available
- Power factor ≥ 0.9
- Flicker Index Below 0.1
- THD < 20%



www.generalluminaire.com

CEILING MOUNT series

Product	Dimension	Wattage	X = CRI	YY = CCT	Efficacy	Voltage	Dimming
---------	-----------	---------	---------	----------	----------	---------	---------

GLV73CD0D01/CW-DA10TSC144XXY	ø 130mm	10W	7 = 70 CRI	27 = 2700K	Up To 115lm/W	120VAC	TRIAC
				30 = 3000K			
				35 = 3500K			
			8 = 80 CRI	40 = 4000K			
				45 = 4500K			
				50 = 5000K			
			9 = 90 CRI	57 = 5700K			
				65 = 6500K			
				CUS*			

GLV73CD0D01/CW-DA15TSC144XXY	ø 130mm	15W	7 = 70 CRI	27 = 2700K	Up To 110lm/W	120VAC	TRIAC
				30 = 3000K			
				35 = 3500K			
			8 = 80 CRI	40 = 4000K			
				45 = 4500K			
				50 = 5000K			
			9 = 90 CRI	57 = 5700K			
				65 = 6500K			
				CUS*			

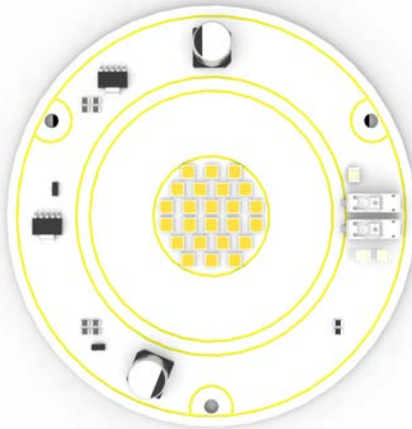
GLV73CG0G0U/CW-DA25TSC188XXY	ø 160mm	25W	7 = 70 CRI	27 = 2700K	Up To 110lm/W	120VAC	TRIAC
				30 = 3000K			
				35 = 3500K			
			8 = 80 CRI	40 = 4000K			
				45 = 4500K			
				50 = 5000K			
			9 = 90 CRI	57 = 5700K			
				65 = 6500K			
				CUS*			

Some CRI options are limited per CCT selection *
 Specification as seen here is subject to change without notice **
 Please contact your General Luminaire L.E.B.U. representative for details

CEILING MOUNT SERIES

Product	Dimension	Wattage	X = CRI	YY = CCT	Efficacy	Voltage	Dimming
GLV73CGOGOT/CW-DA35TSC1D2XY	ø 160mm	35W	7 = 70 CRI	27 = 2700K	Up To 110lm/W	120VAC	TRIAC
				30 = 3000K			
				35 = 3500K			
			8 = 80 CRI	40 = 4000K			
				45 = 4500K			
				50 = 5000K			
			9 = 90 CRI	57 = 5700K			
				65 = 6500K			
				CUS*			

Some CRI options are limited per CCT selection *
 Specification as seen here is subject to change without notice **
 Please contact your General Luminaire L.E.B.U. representative for details



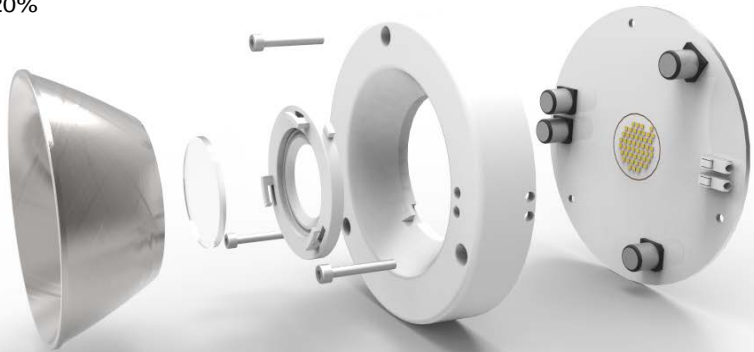
AC-direct cobMODULE series

Product Benefits

- Connect directly to AC mains voltage for class 1 luminaires
- Enables low-cost and compact luminaire designs
- Project cost reduction by simplified installation and BOM reduction
- Enhanced safety and UL listed
- Simplified logistics as no external driver or special cables are required
- 3 year guarantee

Product Features

- LED engine with integrated driver
- Competitive system efficacy for AC operation: up to 103 lm/W
- Color temperatures available: 2700 K to 6500 K
- Color rendering index Ra: > 80, Ra: > 90 available
- Poke-in wire connection available
- Power factor: ≥ 0.9
- Flicker Index Below 0.1
- THD < 20%



AC-direct cobMODULE series

Product	Dimension	Wattage	X = CRI	YY = CCT	Efficacy	Voltage	Dimming
---------	-----------	---------	---------	----------	----------	---------	---------

GLV74CA2A21/CW-DA10TSE124XY	ø 102mm	10W	7 = 70 CRI	27 = 2700K	Up To 118lm/W	120VAC	TRIAC
				30 = 3000K			
				35 = 3500K			
			8 = 80 CRI	40 = 4000K			
				45 = 4500K			
				50 = 5000K			
			9 = 90 CRI	57 = 5700K			
				65 = 6500K			
				CUS*			

GLV74CA2A21/CW-DA20TSE124XY	ø 102mm	20W	7 = 70 CRI	27 = 2700K	Up To 105lm/W	120VAC	TRIAC
				30 = 3000K			
				35 = 3500K			
			8 = 80 CRI	40 = 4000K			
				45 = 4500K			
				50 = 5000K			
			9 = 90 CRI	57 = 5700K			
				65 = 6500K			
				CUS*			

GLV74CA2A21/CW-DA40TSE148XY	ø 102mm	40W	7 = 70 CRI	27 = 2700K	Up To 102lm/W	120VAC	TRIAC
				30 = 3000K			
				35 = 3500K			
			8 = 80 CRI	40 = 4000K			
				45 = 4500K			
				50 = 5000K			
			9 = 90 CRI	57 = 5700K			
				65 = 6500K			
				CUS*			

Some CRI options are limited per CCT selection *
 Specification as seen here is subject to change without notice **
 Please contact your General Luminaire L.E.B.U. representative for details

AC-direct cobMODULE series

Product	Dimension	Wattage	X = CRI	YY = CCT	Efficacy	Voltage	Dimming
---------	-----------	---------	---------	----------	----------	---------	---------

GLV74CD0D01/CW-DA60TSE172XYX	φ 130mm	60W	7 = 70 CRI	27 = 2700K	Up To 99lm/W	120VAC	TRIAC
				30 = 3000K			
				35 = 3500K			
			8 = 80 CRI	40 = 4000K			
				45 = 4500K			
				50 = 5000K			
			9 = 90 CRI	57 = 5700K			
				65 = 6500K			
				CUS*			

GLV74CD0D01/CW-DA80TSE196XYX	φ 130mm	80W	7 = 70 CRI	27 = 2700K	Up To 96lm/W	120VAC	TRIAC
				30 = 3000K			
				35 = 3500K			
			8 = 80 CRI	40 = 4000K			
				45 = 4500K			
				50 = 5000K			
			9 = 90 CRI	57 = 5700K			
				65 = 6500K			
				CUS*			

Some CRI options are limited per CCT selection *
 Specification as seen here is subject to change without notice **
 Please contact your General Luminaire L.E.B.U. representative for details

generalluminaire™

ADDRESS: Minhang District, Shanghai, China

WEBSITE: www.generalluminaire.com

EMAIL: info@gl-lighting.com

TELEPHONE: +86 21-5440-9085



General Luminaire is an LED luminaire and light engine OEM/ODM specialist and for more than 15 years, has been a leader in the emerging, rapidly-growing market of high efficiency LED lighting technologies.

In addition to cutting edge R&D, exemplified by numerous patents, General Luminaire designs and manufactures innovative electronics and LED lighting technologies and supports many of the leaders in the lighting industry from concept to volume production

General Luminaire designs, develops and delivers optimal electronics and LED solutions for a myriad of commercial applications.

We are committed to environmental stewardship and corporate social responsibly, ensuring that our products are leading the way to a brighter and greener future.

www.generalluminaire.com